



**Phase 4 Reopening Plan
March 2021**

Vision Statement

Who are we as a school?

High Tech High is a fiercely progressive, project based, equity driven learning community. We value thoughtful hands-on work that connects the outside world to classroom learning in a way students find meaningful and authentic.

What are our hopes for students during Phase 4?

To be able to provide the structure and support that students need to re-engage with school and finish the semester on a stronger note.

To build school culture in our students so they have a sense of belonging again

To work alongside students on projects related to this learning

What do we want our learning approach to say about us?

Our learning approach will reflect our values – community, authentic work, equity, and collaboration. When we bring students in it will not be to sit on zoom lessons, but rather to engage in work that sets High Tech High Apart from other schools. Moreover, we want students to feel that:

- They are seen, known, and cared for
- Learning can and will continue
- The school is here to support their physical and social-emotional well-being
- They are an important part of our learning community

Timeline

April 6th: All teachers are back in the building

- 9th & 12th grade students work Asynchronously with daily expectations
- 9th & 12th grade teachers work to prepare for in-class learning
- Students in grades 10, 11 work remotely as usual

April 12: 12th grade returns

- Seniors will be invited to come in 2 days per week.
- Seniors will be in AM, synchronous online learning in PM.
- Seniors will be in for 4 weeks before Endersession begins.

April 19th: 9th grade returns

- Return on April 19th (because Seniors will start there on the 12th)
- Roomies (in-school students) and Zoomies (distance learning students)
- Dedicated synchronous teacher time for Zoomies
- 2 days in building, 2 days async, Friday synchronous or field trips.
- 4 cohorts per team.

April 26: 10th grade & 11th grade returns

- 11th grade students will be 1 day / week for Bio Labs
- 10th grade considering 1 or 2 day schedules.

2021 APRIL							
Sun	Mon	Tue	Wed	Thu	Fri	Sat	
	SPRING BREAK				1	2	3
4	Teachers Return				8	9	10
11	12th Grade Returns				15	16	17
18	9th Grade Returns				22	23	24
25	10th & 11th Grade Returns				29	30	

Letter to Families

Dear Families and Students,

I'm pleased to inform you that we will bring back students beginning **Monday, April 12th** for hybrid learning (typically students will be in school **two** days of in person instruction per week). All students may take part in hybrid learning. Please see below for additional information.

*Students will be dropped off at 8:45AM and picked up or leave campus by 3:00 pm for full day students, 12:00 for half day students

*Students will complete the COVID screening each day before beginning class.

*Students should bring a water bottle and dress comfortably for outdoor learning. Hats and sunscreen are encouraged.

* Lunch will be available each day. Snacks and other non-microwavable food from home are permissible.

*Students may not leave to go into Liberty Station for lunch or snacks. They are to stay on campus until they sign out for the day.

*Students must remain in their stable group of up to 25 peers. They may not interact with members from other stable groups.

We will adhere to all the COVID safety requirements outlined by the CDE. Students will need to wear masks at all times while on campus except while eating or drinking. We will also ask you to sign a Health and Safety agreement, vowing to be truthful about COVID screening and test results. All vaccinations will need to be up to date and flu shots are highly recommended.

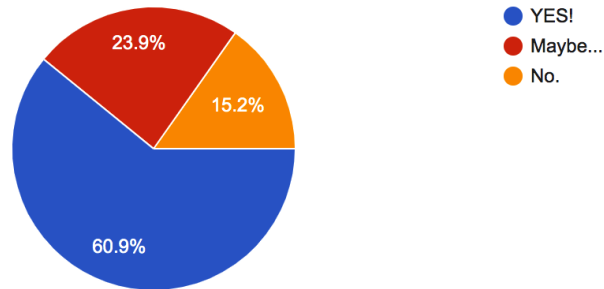
We are looking forward to seeing students learn, grow, and socialize in a safe manner.

Phase 4 Parent Survey Results (March 06, 2021)

With around two thirds of our community responding, we feel able to plan accordingly, making sure to include our community's voice as a foundation for our planning.

Are you interested in sending your child to school for in-person learning?

322 responses



61% of our families who responded are interested in bringing their students back for in-person instruction. 15% would like their students to remain at home for the remainder of the school year. 24% of our families remain unsure.

Schedule

General Schedule 2 room setup, 4 cohorts (C1...C4) Students in 2 days per week:

	Monday	Tuesday	Wednesday	Thursday	Friday
Period 1 9 - 10:30	C1: Math	C3: Math	C1: Math	C3: Math	ASYNC
	C2: Hum	C4: Hum	C2: Hum	C4: Hum	ASYNC
Period 2 10:45 - 12:15	C1: Hum	C3: Hum	C1: Hum	C3: Hum	ASYNC
	C2: Sci	C4: Sci	C2: Sci	C4: Sci	ASYNC
LUNCH 12:15 - 1:00	C1	C3	C1	C3	ASYNC
	C2	C4	C2	C4	ASYNC
Period 3 1:00 - 2:30	C1: Sci	C3: Sci	C1: Sci	C3: Sci	ASYNC
	C2: Math	C4: Math	C2: Math	C4: Math	ASYNC
End of day	AC help	AC help	Advisory	AC help	AC help

Alternative - Monday is a day to set up work for the week. 4 cohorts per team

	Monday	Tuesday	Wednesday	Thursday	Friday
Period 1 9 - 10:30	C3: Math	C1: Math	C3: Math	C1: Math	SYNC
	C4: Hum	C2: Hum	C4: Hum	C2: Hum	SYNC
Period 2 10:45 - 12:15	C3: Hum	C1: Hum	C3: Hum	C1: Hum	SYNC
	C4: Sci	C2: Sci	C4: Sci	C2: Sci	SYNC
LUNCH 12:15 - 1:00	C3	C1	C3	C1	SYNC
	C4	C2	C4	C2	SYNC
Period 3 1:00 - 2:30	C3: Sci	C1: Sci	C3: Sci	C1: Sci	SYNC
	C4: Math	C2: Math	C4: Math	C2: Math	SYNC
End of day	AC help	AC help	Advisory	AC help	AC help

Detailed Schedule (INTERNAL VIEWERS ONLY)

Link to individual grade level / Team plans:

9th grade:

<https://docs.google.com/document/d/1CbLwSLIANm7NfUpFbPUykWvXXe4-zsllKJwbZYP4Yp4/edit?usp=sharing>

10th grade:

<https://docs.google.com/spreadsheets/d/1z3sTWBrR1X6UmSdeqkCn4AGsvCyXVklxjllDWHPraA/edit?usp=sharing>

11th grade:

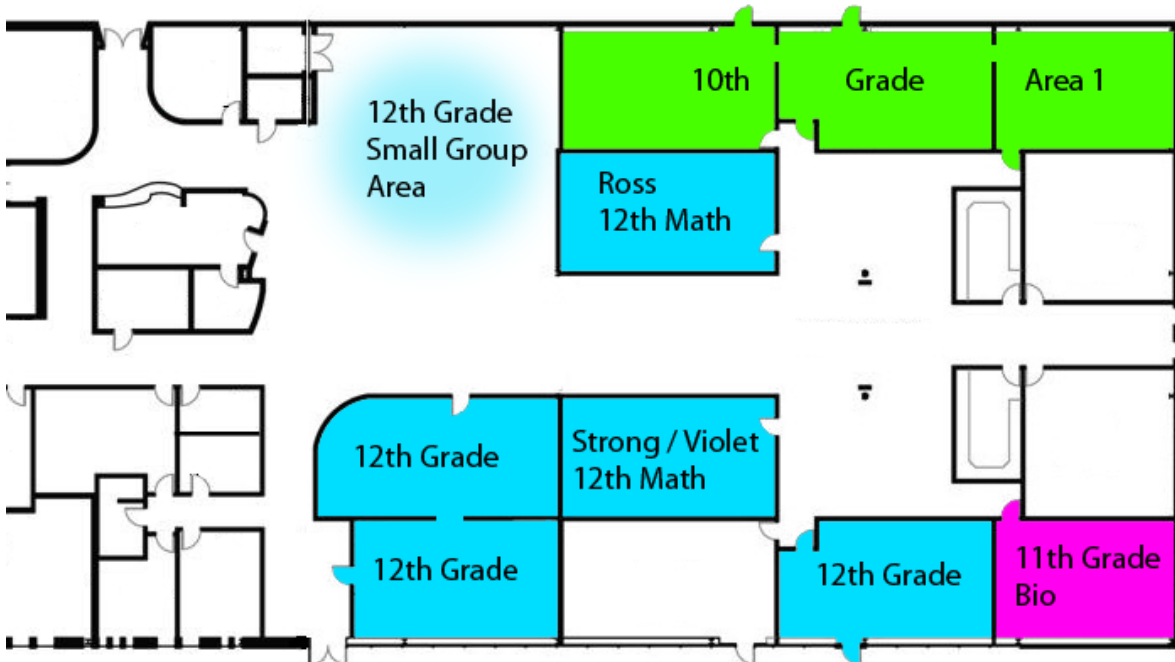
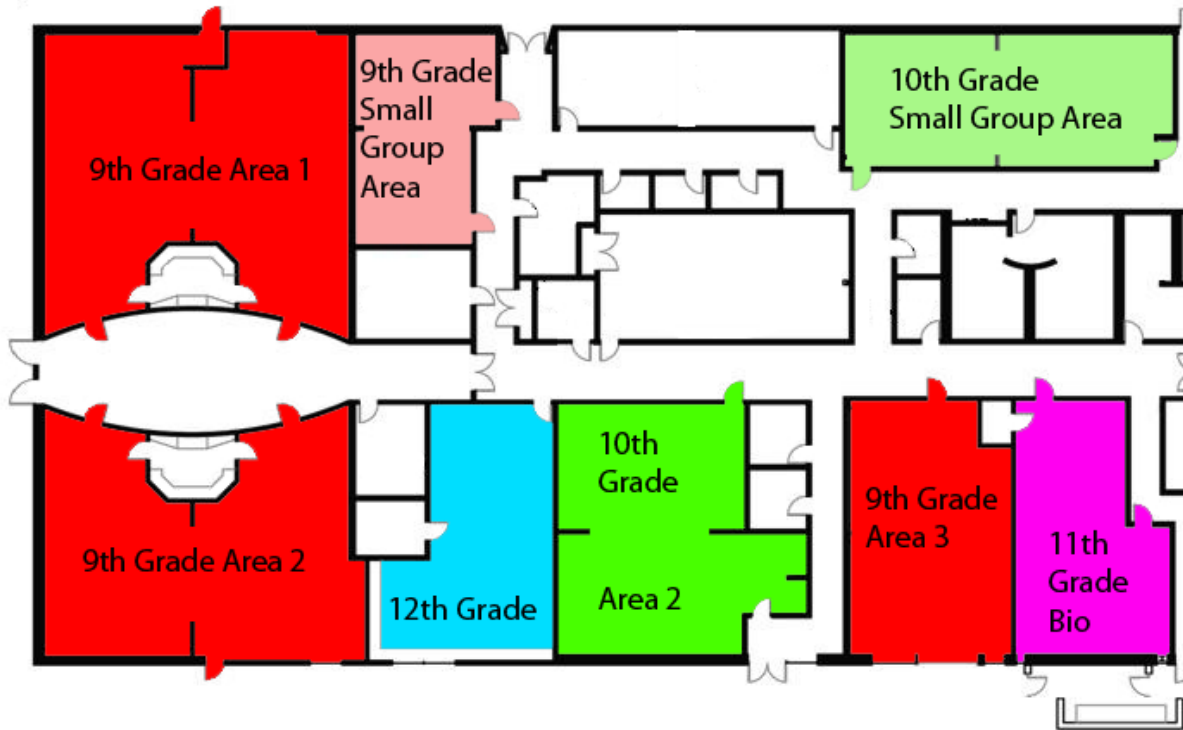
https://docs.google.com/spreadsheets/d/1jktPSskxVjEmFWy8pZn5L9PlmtZ06_4RVKN3X6_xUJ0/edit?usp=sharing

12th grade (Tara/Lucera/Wayne/Sarah):

<https://docs.google.com/document/d/1wP7-PUNgabSmlPbVXjNylLTWY020peg8lrb2DEwZAq4/edit?usp=sharing>

Hybrid In-Person Learning

The emphasis will be on having students work with teachers on hands on work, project work & building school culture.



Distance Learning

Depending on teaching team, In-school students will get:

- **2 asynchronous** days & **1 synchronous** distance learning day in addition to **2 in-school days**.
- **1 asynchronous** days & **2 synchronous** distance learning day in addition to **2 in-school days**.
- **1 asynchronous** days & **3 synchronous** distance learning day in addition to **1 in-school day**.
- 100% distance learning students will receive 4 synchronous and 1 asynchronous day each week. This schedule will be unchanged from the model we have before spring break.

Outdoor Classrooms

Request has been made to our HOA regarding large tents. Many classrooms on the East side of the building have roll-up garage doors that lead to usable outdoor spaces. There are a number of other classrooms that have direct access to outside spaces. We will use portable 10' x 10' tents to provide shade where necessary.

Inclusion & Intervention Groups

Each grade will have a dedicated "Small Group Area" for Ed specialists and academic coaches to work with high needs students, and students who require extra remediation, or extra in-school time.

Distance Learning ONLY Option

Families who opt in for the 100% distance learning model will join live lessons virtually for the same number of weekly minutes as they are receiving currently. We are committed to the idea that no student should receive an inferior educational experience because of their decision to remain home.

Hybrid Distance Learning

Families who opt in to a hybrid in-person learning experience at HTH will have an opportunity to come to school starting in April. We will be using a tiered approach to reopening. The first weeks in April, students will have an opportunity to come into campus and get reacquainted with in-person schooling before beginning a consistent hybrid schedule at the end of April.

Arrival Procedures

Check In Procedure (Vanessa, Marcus & Andrew)

1. Take student's temperature (or have them self temp check via wall mounted unit)
2. Ask entry questions
 - Do you have a new cough, nasal congestion, or runny nose?
 - Are you experiencing shortness of breath or difficulty breathing?
 - Are you having new muscle pain or fatigue?
 - Do you have a headache (that is not normal for you)?
 - Do you have a sore throat?
 - Are you experiencing a new loss of taste or smell?
 - Are you experiencing nausea, vomiting, abdominal pain, or diarrhea?
 - Do you have a new rash?
 - Have you been exposed to anyone who has been tested positive for COVID-19 in the last 2 weeks?
3. Use hand sanitizer
4. Send students to classroom/outdoor workspace one at a time
5. Dismiss students and remind them to avoid contact with other groups

Will examine opening extra entry points as we progress.

Snack/Break/Lunch

Half Day Students (11th grade, 12th grade (John/Pat)) will depart at lunch time.

Full day students (9th grade, 10th grade, 12th grade (Lucera/Tara)): Staggered lunch times, dedicated outdoor space for each team. Spaces are:

Team Aguirre - Outside Fishbowl on grass (south side)

Team Ruff - East Side of HTH by Fishbowl garage door

Team Strong - East Side of bldg by Engineering Room Garage door.

Team Borek - East Side of bldg by Chem Room Garage door.

Team Griffin - west Side of bldg by Griffin / Evans exterior doors.

Team Lucera/Tara - East Side of bldg behind Tara's room

Cleaning

Classroom:

- All students must use hand sanitizer each time they enter the classroom
- Students must go straight to their labeled table and chair
- Students will be seated a safe distance away from each other (4-6ft, chair to chair)
- Each student's supplies (paper, pencil, computers and headphones) will be kept on the students' desk.

End of the Day Cleaning

- Teacher will spray cleaner on each table and chair
- Teacher will spray paper towels with cleaner to wipe down electronics such as Chromebooks and laptops
- Student will wipe down learning areas with a paper towel. Facilities will decontaminate with fogger any space where students enter at day's end.

Water & Food

- Students will bring reusable water bottles to keep on their desks
- The only time they may remove their masks indoors is to take a drink of water. They must immediately put their mask back on after drinking.
- Snacks and lunch must be eaten outside during designated break times.
- Lunch brought by students may not be microwaved on campus

Materials:

Each student will have his or her own computer that will not be shared. Teachers will each be provided with sufficient funds to purchase individual student supplies.

Health and Safety

In the classroom:

Desks and chairs set up for individual use, distanced 4 to 6 feet apart.
Cleaning supplies available for each student to wipe down their area as needed.
Two doors available at most classrooms in use to enter & exit separately.
Teachers will pass out any materials and/or technology needed by students.
No sharing or exchanges of materials or tools amongst students.
All items to be wiped down by the student prior to returning to the teacher.

Bathrooms:

Stalls and sinks have been marked off to ensure social distancing.
Stickers placed on floor for social distancing in case of a line.
Will minimize the number of students going to the bathroom at once by staggering times by classroom, reminding students to use the bathroom at specific times.

Student/Family Protocols & Expectations

- Completed e-Collect Family Agreement on Powerschool before entering the school building
- No parents or siblings will be allowed in the building
- [Mitigation protocol](#) at school entry
- Everyone wears masks at all times, including outdoors (with the exception of lunch time)
- Everyone must maintain a social distance of 6 ft at all times
- Everyone should wash their hands or use hand sanitizer upon entry and exit of the classroom or building.
- Students remain in cohorts while on campus at all times

Staffing/Supervision

- As in normal times, the stable group should have one adult teaching and supervising students.
- Responsibilities include:
 - Working within line of sight of the stable group
 - Giving reminders to stay on task and remain vigilant with safety
 - Grade levels: communicate for how you will utilize support staff

Contingency Plans & Decision Tree

If a child is showing symptoms at school, they will go to the **isolation area (currently the small classroom near the front desk)**.

- [Safety Protocols](#)
- Every staff member will be tested for COVID-19 as students return to in-person instruction. Testing will be provided by HTH on campus free of charge.
- All fully immunized staff (2 doses of Pfizer, 2 doses of Moderna, or 1 Johnson & Johnson) will not require as frequent COVID-19 tests.
- All Directors, Deans, and Site Managers will go through Decision Tree training for COVID screening. The Decision Tree includes the contingency and mitigation guidance for when students and staff members become infected or are potentially exposed to the virus.
- For students with a chronic condition (i.e., allergies, sinuses, chronic cough, etc.), parents must submit Chronic Medical Condition Form, filled out by student's PCP, to the site manager prior to the first day on campus.

In case of sick student

- Student will enter the Isolation Area

- Parents will be called and asked to pick up the student immediately

COVID-19 Symptom Decision Tree*

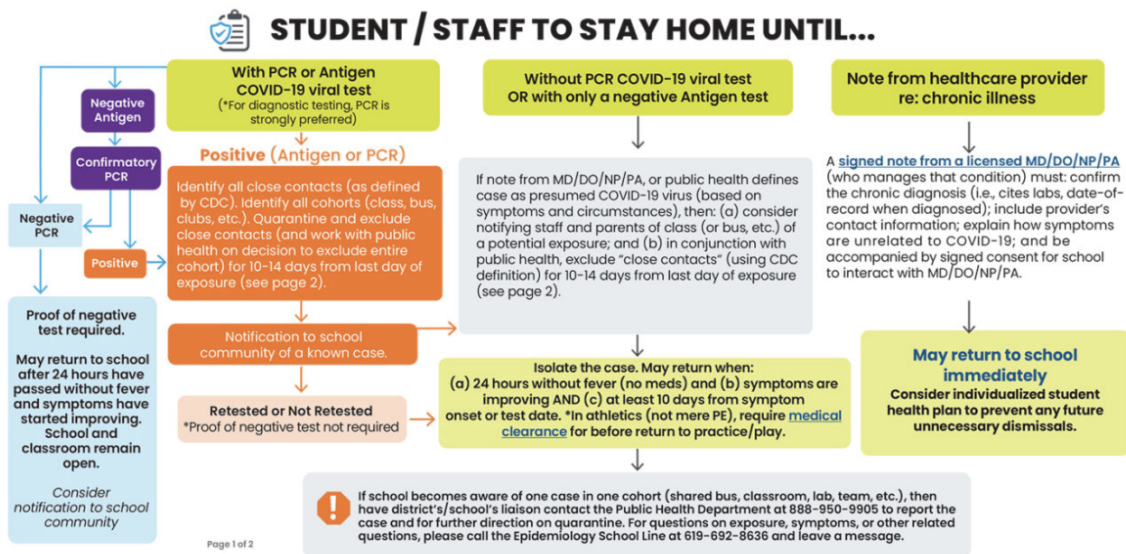
*Applies regardless of vaccination status (Version: 1/28/2021)

At school, student or staff member develops any one of the following signs or symptoms:

- Fever with or without chills/rigors (fever defined as $T \geq 100.0$ that does not resolve within 30 min. without medication)
- Cough* Shortness of breath Nasal congestion/rhinorrhea (runny nose)* Sore throat
- Nausea, vomiting, or diarrhea* Fatigue* New loss of taste/smell Headache*
- Muscle or body aches* Poor feeding or poor appetite*

* Disregard this symptom if school personnel already aware of a chronic, pre-existing condition that causes the symptom. The nature of the presenting symptom (e.g., duration, intensity) must be consistent with the underlying chronic condition.

ACTION: Apply appropriate PPE; isolate student/staff member until sent home; recommend they reach health care provider for instructions. Note: Other infections can cause same symptoms (e.g., flu, strep, etc.) but these do not rule out COVID-19 as co-occurring



- The student may return to school: Parents will be given instructions to meet one of the 3 criteria to return to campus based on specific students' situation and the **current** decision tree protocol/ timeline. (see hive for current doc)

Quarantine of Persons Exposed to COVID-19

A "close contact" is a contact with a COVID-19 patient that occurs anywhere between 48 hours before the COVID-19 patient's symptoms began (or, for asymptomatic patients, **two days** prior to test specimen collection), and until the COVID-19 patient is no longer required to be isolated, and the contact:

- 1 Were within 6-feet of a COVID-19 patient for a cumulative total of 15 minutes or more over a 24-hour period; or
- 2 Had unprotected contact with the body fluids and/or secretions (including, but not limited to, being coughed on or sneezed on, sharing utensils, or drinking out of the same container) of a COVID-19 patient.

All persons without COVID-19 symptoms who have had close contact with a COVID-19 patient must immediately take quarantine themselves in their home or another residence. They may end quarantine and return to school/work after:

- **10 days** (e.g., on the 11th day) after the last contact with a COVID-19 patient **as long** as they can self-monitor for **COVID-19 symptoms** and **consistently use face covering and distance at least 6 feet** from all others through Day 14.
- **14 days** (e.g., on the 15th day) after the date of last exposure if they **cannot** self-monitor for **COVID-19 symptoms** nor consistently use face covering and distance at least 6 feet from all others after a 10-day quarantine or work with severely immunosuppressed persons (e.g., bone marrow or solid organ transplants, chemotherapy).
- Negative COVID-19 test results will not shorten the time for these individuals.
- **If symptoms occur during quarantine**, individuals should immediately self-isolate and contact their healthcare provider or San Diego County Public Health Services and seek testing.

Quarantine Guidelines Based on Recently Acquired Immunity Status

According to the CDC, quarantine is not required for people who have been in close contact with someone who has COVID-19 under the following scenarios:

- People who have tested positive for COVID-19 within the past three months and recovered and are not now experiencing another onset of any COVID-19 symptom.
- People who have been fully vaccinated (i.e. two weeks past final dose of a COVID-19 vaccine) within the last three months and are not now experiencing an onset of any COVID-19 symptom.

 NOTE: 7-day quarantine rarely applies in the K-12 school setting and only applies to healthcare workers; for further guidance see this [memo](#).



Academic Coaches

HTH currently has 9 teaching teams and 8 Academic coaches. By opening we expect to have 1 additional AC, so that each team can have a dedicated AC for students.

TO DO

- Laptop Inventory
- Parent letter to send out includes the following:
 - Information on air filter systems in school
 - Information on quarantine and process
 - Don't send your student to school if (list symptoms)
 - Ok to do sports and come to campus for learning
 - COVID testing update
- Put together a list of in person students and online students by grade